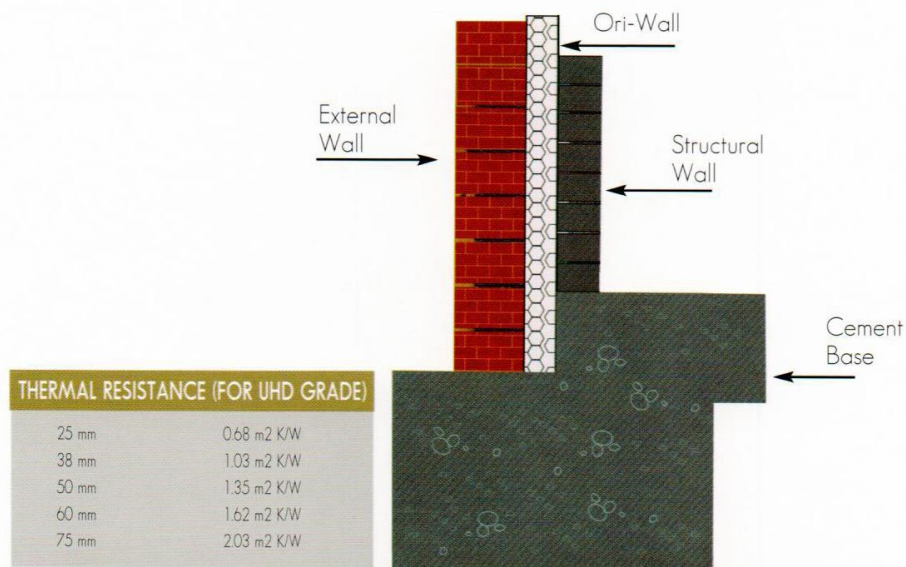


Ori-Wall

Ori-Wall is fixed to the wall by mechanical fitting / ties available in local market or also can be bonded with for Polystyrene and also available in the local market.



ORIFOAM



Expanded Polystyrene (EPS)

Standards	ASTM C 578	TYPE XI		TYPE I	TYPE VIII		TYPE II		TYPE IX			TYPE XIV		TYPE XV					
	ORI FOAM	OF 14	OF 16	OF 18	OF 20	OF 22	OF 24	OF 26	OF 28	OF 30	OF 32	OF 35	OF 40	OF 45	OF 50	OF 60	OF 70	OF 80	
Density Range	12 - 14 Kg/m ³	14 - 16 Kg/m ³	16 - 18 Kg/m ³	18 - 20 Kg/m ³	20 - 22 Kg/m ³	22 - 24 Kg/m ³	24 - 26 Kg/m ³	26 - 28 Kg/m ³	28 - 30 Kg/m ³	30 - 32 Kg/m ³	32 - 35 Kg/m ³	35 - 38 Kg/m ³	38 - 40 Kg/m ³	40 - 42 Kg/m ³	42 - 45 Kg/m ³	45 - 48 Kg/m ³	48 - 50 Kg/m ³	50 - 80 Kg/m ³	
Physical Properties	Compressive Resistance	35	69	90	104		173			276		414							
		(@ yield or 10 % deformation, which occurs first, min kPa)																	
	Thermal Resistance	0.55	0.63	0.67	0.70		0.74			0.74		0.76							
		(of 25.4 mm thickness @ mean temperature of 24 ± 1 °C min, K-m ² /W)																	
	Thermal Conductivity	0.0482	0.0419	0.0394	0.0377		0.0356			0.0356		0.0347							
		(max, W/m.K @ 35 °C and 60 % RH)																	
	Flexural Strength	70	173	208	240		345			414		517							
		(min, kPa)																	
	Water Vapor Permeance	5.0	5.0	3.5	3.5		2.5			2.5		2.5							
		(of 25.4 mm thickness, max, perm)																	
Water Absorption	4.0	4.0	3.0	3.0		2.0			2.0		2.0								
	(total immersion, max, volume %)																		
Dimensional Stability	2.0	2.0	2.0	2.0		2.0			2.0		2.0								
	(change in dimensions, max %)																		
Oxygen Index	24	24	24	24		24			24		24								
	(min, volume %)																		
Density	12	15	18	22		29			38		46								
	(min Kg / m ³)																		

P.O. Box: 144 Postal Code:124 ,Rusayl,Sultanate Of Oman ,Tel: (968) 24446561/24446670 ,Fax: (968) 24446493
 Email: oppco@omantel.net.om, Web: www.

